

THE STATE OF HEALTH CARE



HEALTH CARE WORKERS IN CRISIS

Issue #1 of our report showed that almost half of health care support workers are looking for alternative employment, and over 75% of health care aides report that they work short-staffed once or more per week.

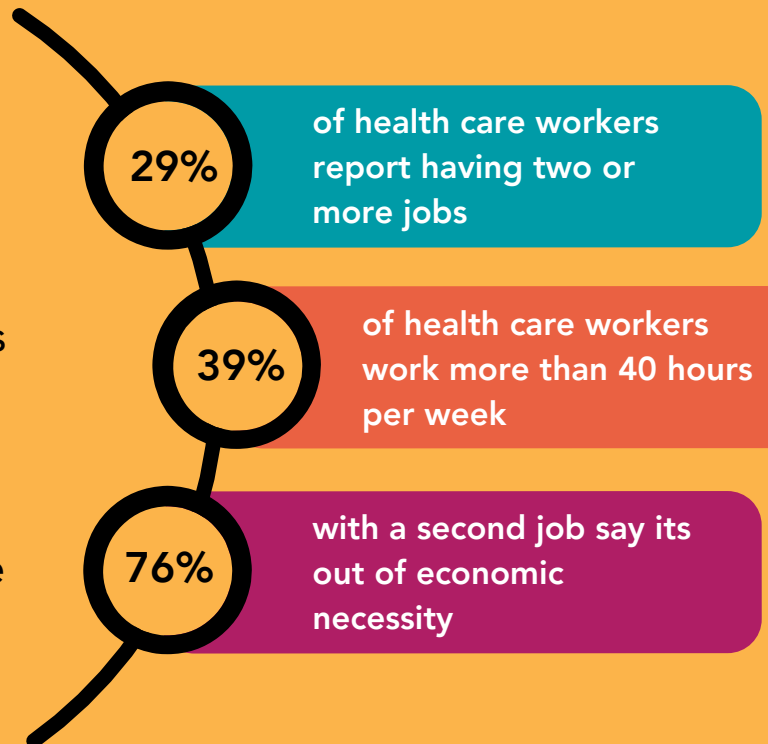
Issue #2 of our report highlights the fact that far too many front line health workers in Manitoba are struggling just to get by.

OVERWORKED

Health care support workers are on the front lines of health care, working for Manitobans every single day.

More and more health care workers are struggling to get by, with many working two or more jobs .

Recruiting and retaining health care workers must include attractive wages, benefits, and working conditions.



A NEW KIND OF HEALTH CARE CUT

59% have to cut back on household spending, including clothing

56% report being unable to save for the future, including children's education

52% have had to cut back on food and groceries

49% have cut back on social activities including activities for children

Low wages and high inflation have had negative impacts on the social, mental, and financial well-being of Manitoba's health care support workers, forcing front-line workers to make cuts.

52% report struggling to be able to pay even their basic monthly bills.

59% report feeling stress and anxiety about being able to afford everything they need, or worry that an unexpected event would cause hardship for them and their family.



ECONOMIC IMPACT OF LOW WAGES

Despite making cuts to their own quality of life, **37% of health care workers reported that they've been forced to drain their savings account.**

About **38% of health care support workers have reported taking on more personal debt**, such as credit cards, bank loans, and even borrowing from friends and family.

1 in 16

Health care support workers have visited food banks or relied on charity.

1 in 9

Health care support workers have faced housing insecurity or were worried about where they will live.

HEALTH CARE WORK IS NOT A SIDE GIG

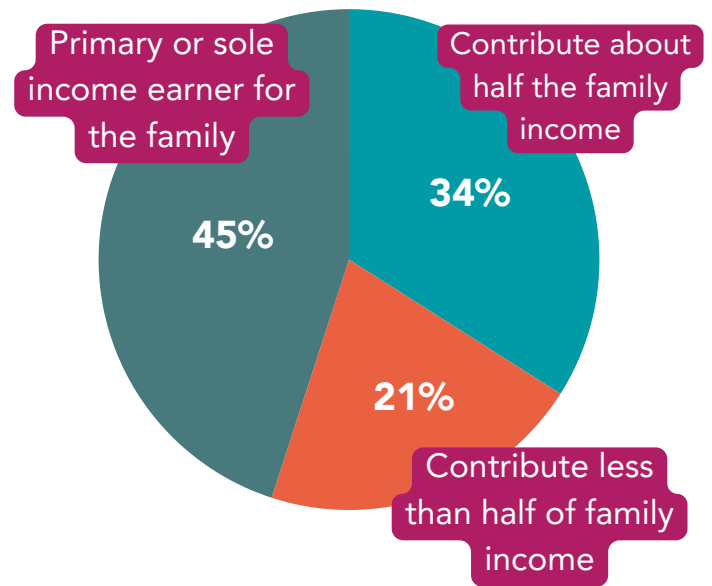
45% of health care workers are their family's sole or primary provider.

Another 34% contribute to about half their family income.

63% of health care workers have dependents who rely on them for support.

When government chooses to pay poverty wages to health care workers, they are pushing whole families further into poverty.

Health care workers' contribution to family income.



WORKER TESTIMONIES

These are real testimonies from front line health care support workers. Hundreds of workers submitted their stories on how low wages and economic precarity has impacted their lives.

I have begun to give up on the idea of starting a family because I know I could never afford to raise a child.

I struggle to afford my diabetes supplies and insulin because our benefits are so poor and cost of living is so high

People stay in abusive relationships because they don't want to live on the streets, because they can't afford to live on their own.

I'm drowning and scared as a single mom of twins. People are shocked when I tell them what I do and how little I make.

Data from this survey came from over 5,000 health care support workers in the WRHA, Shared Health, Northern Regional Health Authority, and Southern Health-Sante Sud.

The questions were part of the CUPE bargaining survey in March 2024, conducted to identify priorities for front line health care support workers in Manitoba. Workers submitted their own stories as part of this survey.

ALL IN for HEALTH CARE



CUPE

Take action for better health care
Sign the petition at allinforhealthcare.ca